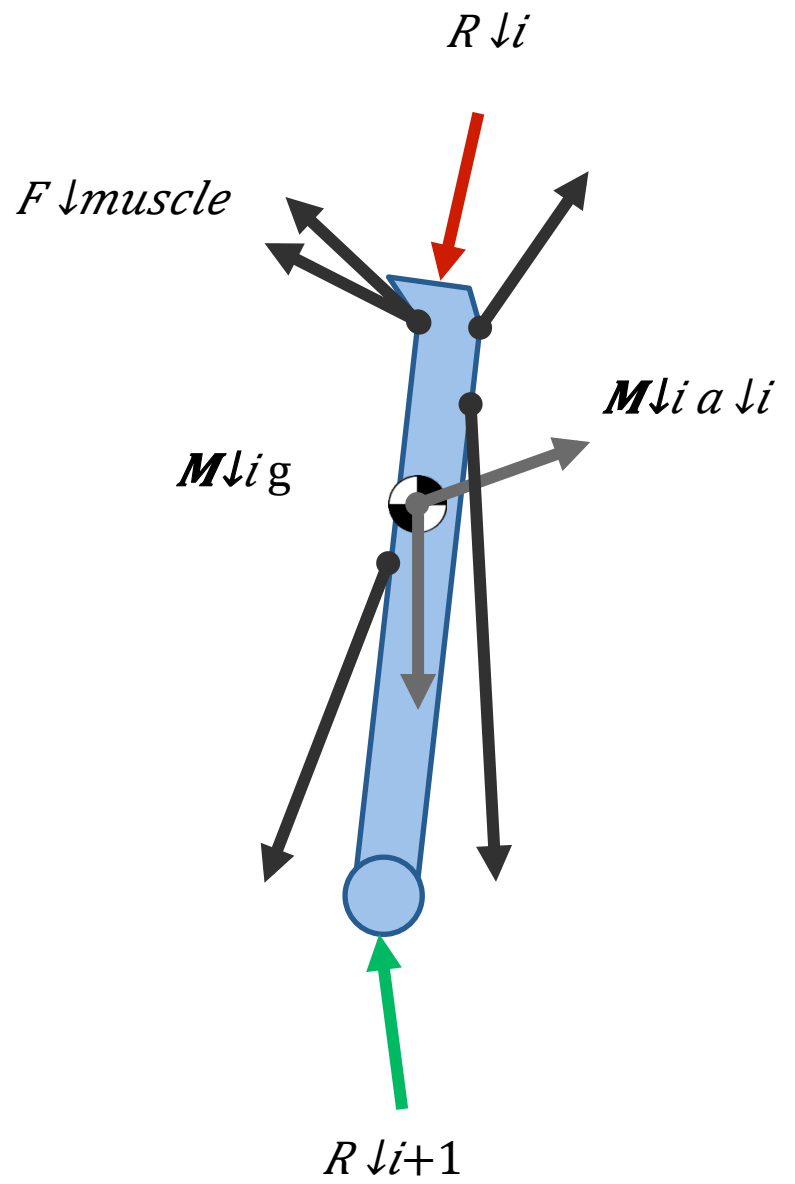
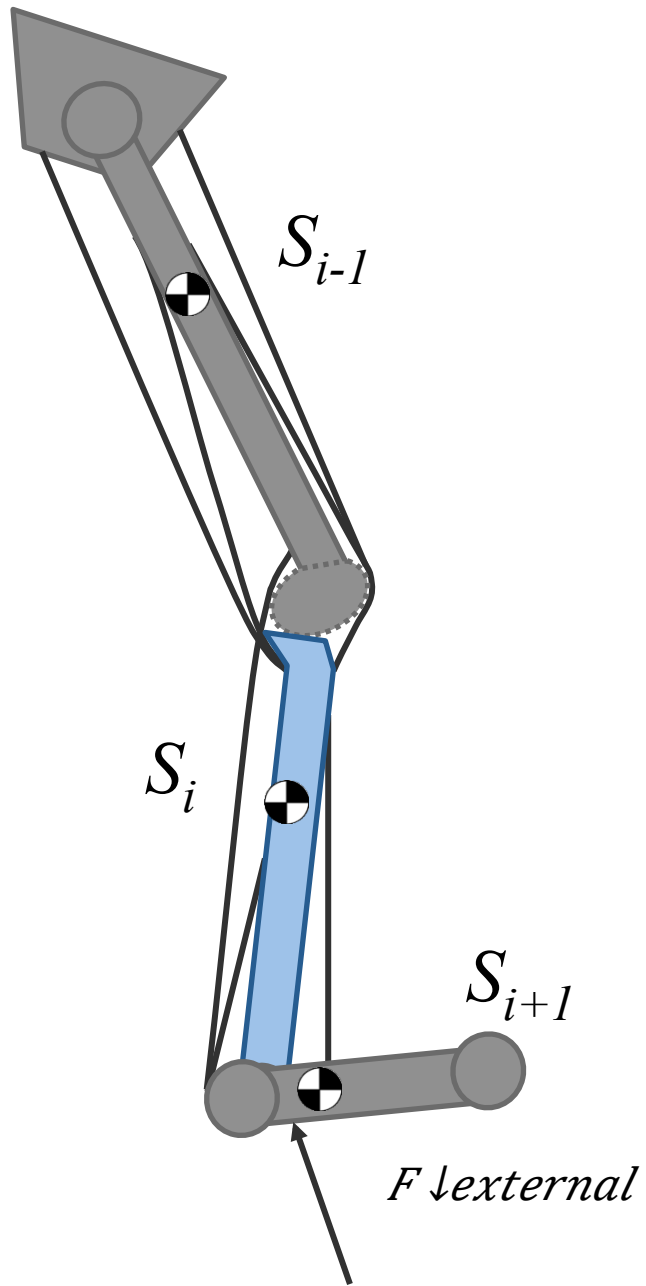


Estimating Muscle and Joint Forces in OpenSim

Using a Static Optimization
and a JointReaction
Analysis





Static Optimization

Inputs

Model Kinematics file

External Loads settings

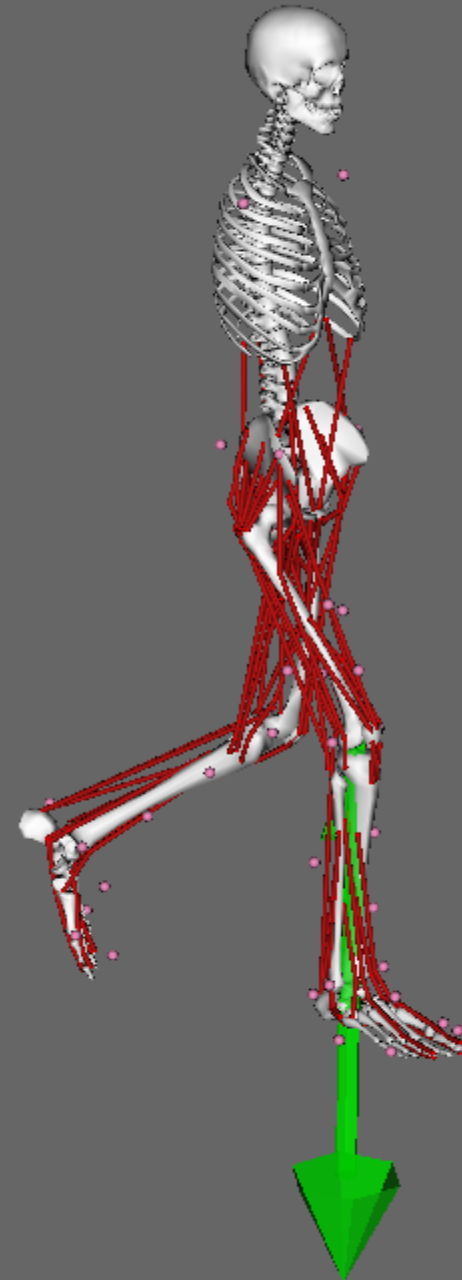
External Loads data

Residual Actuators
for un-actuated joints

Output

Actuator Forces

Actuator Activations



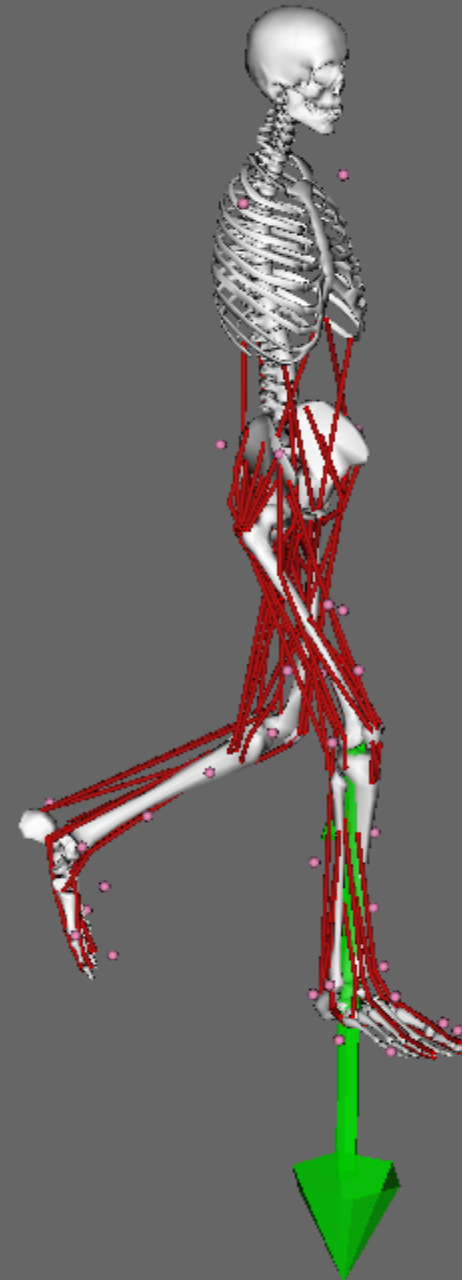
Joint Reaction Analysis

Inputs specific to JointReaction

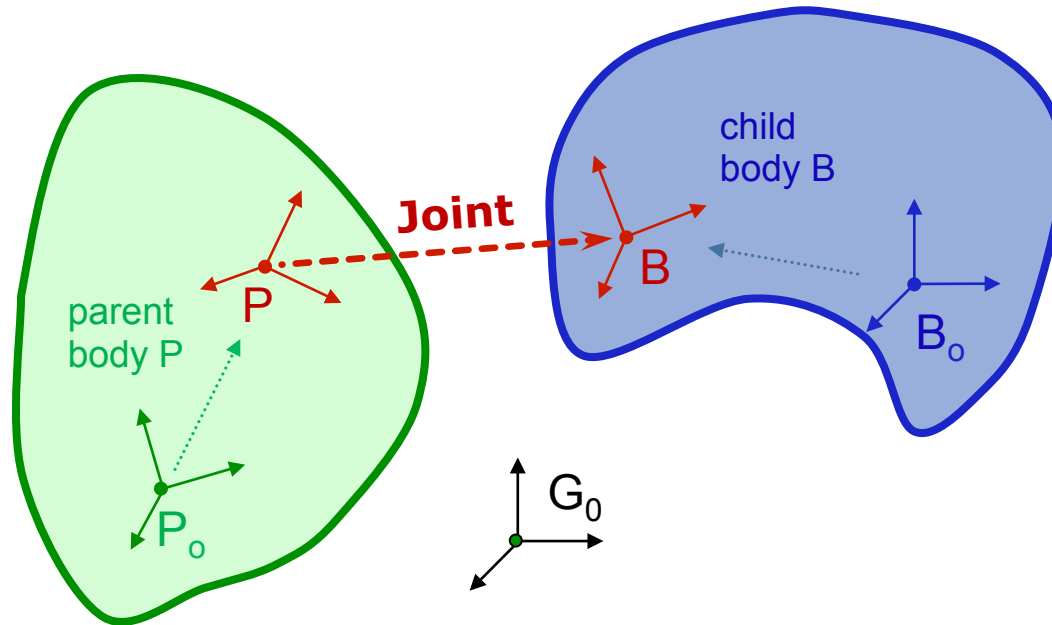
<step_interval>
<joint_names>
<apply_on_bodies>
<express_in_frame>
<forces_file> optional

Output

*_JointReaction_ReactionLoads.sto



Choosing the Joint Force Representation



<apply_on_bodies>: **child** (default) or **parent**

<express_in_frame>: ground (default), **child**, or **parent**

