

FEATURES

13 NCBC Update: Shedding New Light on Biological Complexity

BY KATHARINE MILLER

21 Tool Dissemination—Doing It Right

BY KRISTIN SAINANI, PhD

DEPARTMENTS

- 1 GUEST EDITORIAL**
IT TAKES A VILLAGE: BUILDING THE NEXT
GENERATION OF BIOMEDICAL ONTOLOGIES BY
MARK A. MUSEN, MD, PhD

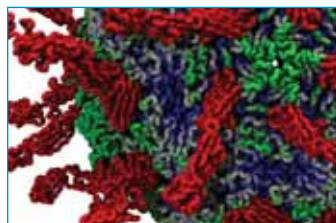
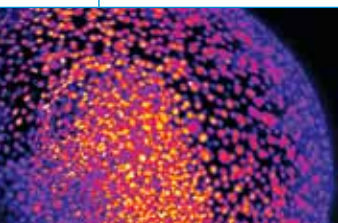
- 3 SIMBIOS NEWS**
STOP WHEEL REINVENTION,
SHARE YOUR SIMULATIONS
BY JOY P. KU, PhD

- 5 NEWSBYTES**
BY HADLEY LEGGETT, MD, LISA GROSSMAN,
MICHAEL WALL, PhD, CASSANDRA BROOKS,
MICHAEL M. TORRICE, PhD, KAYVON SHARGHI,
EMMANUEL ROMERO, LIZZIE BUCHEN, STEPHANIE
PAPPAS, MOLLY DAVIS
- Modeling Cracks in Clogged Arteries
 - Modeling Muscles From the Inside Out
 - “Digital Embryo” Created
 - The Circuitry of Yeast
 - Watching a Molecule Bind
 - Identifying a Cell’s Weakest Link
 - Diagnosing Cell Circuitry
 - Cancer’s Signature—Written in Blood
 - Blurring Data for Privacy and Usefulness
 - Modular Modeling

- 29 UNDER THE HOOD | NETWORK-BASED APPROACHES TO
PREDICTION OF DISEASE GENES** BY KARTIK MANI, PhD

- 30 SEEING SCIENCE | VISUALIZING VENTRICULAR FIBRILLATION**
BY KATHARINE MILLER

COVER ART: CREATED BY RACHEL JONES OF WINK DESIGN STUDIO USING A COLLECTION
OF IMAGES FROM THE NCBCs. ROBOTIC ARM IS © ERAXION | DREAMSTIME.COM



Winter 2008/2009

Volume 5, Issue 1
ISSN 1557-3192

Executive Editor David Paik, PhD

Managing Editor Katharine Miller

Associate Editor Joy Ku, PhD

Science Writers

Katharine Miller • Kristin Sainani, PhD
Cassandra Brooks • Emmanuel Romero
Hadley Leggett, MD • Kayvon Sharghi
Lisa Grossman • Lizzie Buchen
Michael M. Torrice • Michael Wall, PhD
Molly Davis • Stephanie Pappas

Community Contributors

Mark Musen, MD, PhD
Kartik Mani, PhD
Joy Ku, PhD

Layout and Design

Wink Design Studio

Printing

Advanced Printing

Editorial Advisory Board

Russ Altman, MD, PhD, Brian Athey, PhD,
Dr. Andrea Califano, Valerie Daggett, PhD,
Scott Delp, PhD, Eric Jakobsson, PhD,
Ron Kikinis, MD, Isaac Kohane, MD, PhD,
Mark Musen, MD, PhD, Tamar Schlick, PhD,
Jeanette Schmidt, PhD, Michael Sherman
Arthur Toga, PhD, Shoshana Wodak, PhD,
John C. Wooley, PhD

**For general inquiries,
subscriptions, or letters to the editor,**
visit our website at
www.biomedicalcomputationreview.org

Office

Biomedical Computation Review
Stanford University
318 Campus Drive
Clark Center Room S231
Stanford, CA 94305-5444

Biomedical Computation Review
is published quarterly by:



An NIH National
Center for Physics-
Based Simulation of
Biological Structures

Publication is made possible through the NIH
Roadmap for Medical Research Grant U54
GM072970. Information on the National Centers
for Biomedical Computing can be obtained from
<http://nihroadmap.nih.gov/bioinformatics>. The NIH
program and science officers for Simbios are:

Peter Lyster, PhD (NIGMS)
Jennie Larkin, PhD (NHLBI)
Jennifer Couch, PhD (NCI)
Semahat Demir, PhD (NSF)
Peter Highnam, PhD (NCRR)
Jerry Li, MD, PhD (NIGMS)
Yuan Liu, PhD (NINDS)
Richard Morris, PhD (NIAID)
Joseph Pancrazio, PhD (NINDS)
Grace Peng, PhD (NIBIB)
Nancy Shinowara, PhD (NCMRR)
David Thomassen, PhD (DOE)
Ronald J. White, PhD (NASA/USRA)
Jane Ye, PhD (NLM)