

### FEATURES

## 10 Reverse Engineering the Brain

BY ROBERTA FREIDMAN, PhD

## 18 Bringing the Fruits of Computation to Bear on Human Health:

### It's a Tough Job but the NIH Has to Do It

BY KATHARINE MILLER

### DEPARTMENTS

**1** GUEST EDITORIAL | OPEN SOLUTIONS FOR BIOMEDICAL RESEARCH BY RON KIKINIS, PhD, AND TINA KAPUR, PhD

**2** POINT/COUNTERPOINT | CLINICAL DATA REPOSITORIES: LESS THAN MEETS THE EYE OR MORE VALUABLE THAN YOU'D EXPECT? RUSS B. ALTMAN, MD, PhD, VS. ISAAC KOHANE, MD, PhD

**4** SIMBIOS NEWS | SOLVING THE 3-D RNA STRUCTURE PUZZLE WITH NAST BY JOY P. KU, PhD

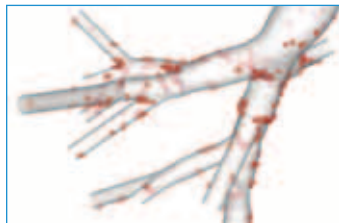
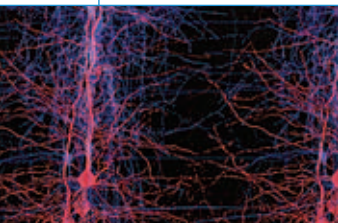
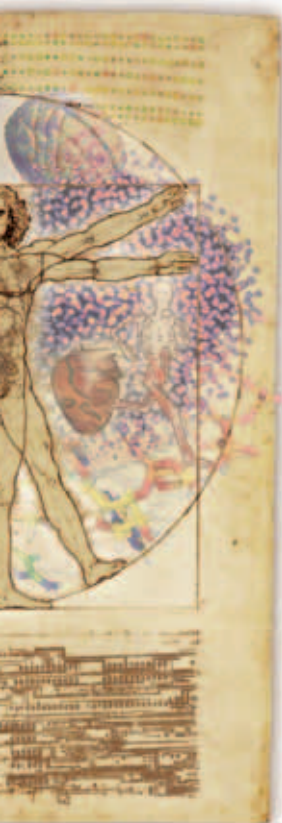
**5** NEWSBYTES  
BY CHANDRA SHEKHAR, PhD, KRISTIN SAINANI, PhD, RACHEL TOMPA, PhD, AND KASPAR MOSSMAN, PhD

- Decoding Promotion
- The Brain in Transition
- The Fate of Inhaled Particles
- Predicting Vaccine Efficacy
- RNA Families Set Up House In Wikipedia
- A Model Neuron

**29** UNDER THE HOOD | IMPLICIT REPRESENTATION OF BIOLOGICAL SHAPES AND FORMS BY BIN DONG

**30** SEEING SCIENCE | BUILDING RNA 3-D STRUCTURE BY KATHARINE MILLER

COVER ART: CREATED BY RACHEL JONES OF WINK DESIGN STUDIO USING A NEUROGRID CHIP, COURTESY OF RODRIGO ALVAREZ. BRAIN IS © YAKOBCHUK | DREAMSTIME.COM.  
PAGE 16: ARTWORK CREATED BY RACHEL JONES OF WINK DESIGN STUDIO WITH IMAGES FROM THE NCBCs. VITRUVIAN MAN AND AGED PARCMENT IMAGES ARE © SQBACK | DREAMSTIME.COM.  
INTERNAL ORGANS BASED ON IMAGE © SEBASTIAN KAULITZKI | DREAMSTIME.COM.



**Spring 2009**

Volume 5, Issue 2

ISSN 1557-3192

**Executive Editor** David Paik, PhD

**Managing Editor** Katharine Miller

**Associate Editor** Joy Ku, PhD

#### Science Writers

Katharine Miller, Kristin Sainani, PhD,  
Chandra Shekhar, PhD,  
Roberta Friedman, PhD,  
Kaspar Mossman, PhD, Rachel Tompa, PhD

#### Community Contributors

Ron Kikinis, PhD, Tina Kapur, PhD, Bin Dong,  
Joy Ku, PhD, Russ B. Altman, MD, PhD,  
Isaac Kohane, MD, PhD

#### Layout and Design

Wink Design Studio

#### Printing

Advanced Printing

#### Editorial Advisory Board

Russ Altman, MD, PhD, Brian Athey, PhD,  
Dr. Andrea Califano, Valerie Daggett, PhD,  
Scott Delp, PhD, Eric Jakobsson, PhD,  
Ron Kikinis, MD, Isaac Kohane, MD, PhD,  
Mark Musen, MD, PhD, Tamar Schlick, PhD,  
Jeanette Schmidt, PhD, Michael Sherman  
Arthur Toga, PhD, Shoshana Wodak, PhD,  
John C. Wooley, PhD

**For general inquiries, subscriptions, or letters to the editor, visit our website at [www.biomedicalcomputationreview.org](http://www.biomedicalcomputationreview.org)**

#### Office

*Biomedical Computation Review*  
Stanford University  
318 Campus Drive  
Clark Center Room S231  
Stanford, CA 94305-5444

*Biomedical Computation Review* is published quarterly by:



The NIH National Center for Physics-Based Simulation of Biological Structures

Publication is made possible through the NIH Roadmap for Medical Research Grant U54 GM072970. Information on the National Centers for Biomedical Computing can be obtained from <http://nihroadmap.nih.gov/bioinformatics>. The NIH program and science officers for Simbios are:

Peter Lyster, PhD (NIGMS)  
Jennie Larkin, PhD (NHLBI)  
Jennifer Couch, PhD (NCI)  
Semahat Demir, PhD (NSF)  
Peter Highnam, PhD (NCCR)  
Jerry Li, MD, PhD (NIGMS)  
Yuan Liu, PhD (NINDS)  
Richard Morris, PhD (NIAID)  
Joseph Pancrazio, PhD (NINDS)  
Grace Peng, PhD (NIBIB)  
Nancy Shinowara, PhD (NCMRR)  
David Thomassen, PhD (DOE)  
Ronald J. White, PhD (NASA/USRA)  
Jane Ye, PhD (NLM)